

TOYOTA

2024 Sienna

2024 SIENNA

From the everyday to everywhere.

Unleash your spontaneous spirit in the 2024 Toyota Sienna. Whether you're conquering city roads or blazing trails, this vehicle is packed with the tech you crave, ample space and impressive efficiency. With its class-leading EPA-estimated 36 combined mpg¹ and available sport-tuned suspension, Sienna is ready to fuel anything from your everyday errands to your exciting escapades.



XSE shown in Ruby Flare Pearl.²



Woodland Edition shown in Cement. Never tow beyond a vehicle's published towing capacities. Do not overload your vehicle. See Owner's Manual for weight limits and restrictions.



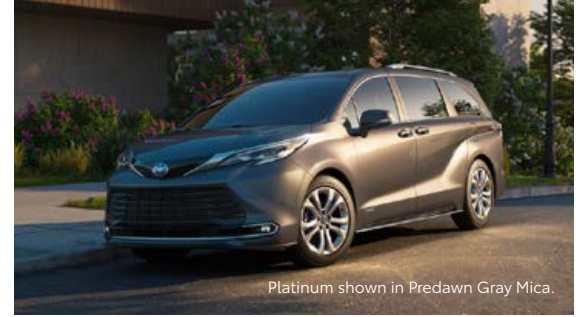
XSE shown in Ruby Flare Pearl.²



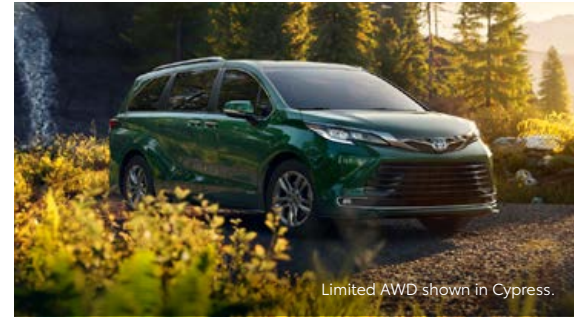
See numbered footnotes in Disclosures section.



XSE shown in Ruby Flare Pearl²



Platinum shown in Predawn Gray Mica.



Limited AWD shown in Cypress.

Sporty styling

With available 20-in. dark wheels and sporty black accents, including a honeycomb grille, Sienna's modern design matches your sense of style.

EXTERIOR

Style, with room to spare.

Whether you're going to your daughter's dance recital or taking your partner out for date night, Sienna's picture-perfect look is ready for any occasion.

Premium exterior

Sienna's design is as stylish as it is functional. Its unmistakable silhouette inspires you to accomplish whatever's on the agenda, in style.

Bold colors

Stand out from the pack with Sienna's eye-catching exterior colors. From Cypress green to Cement, there's a color that'll make a statement wherever you go.

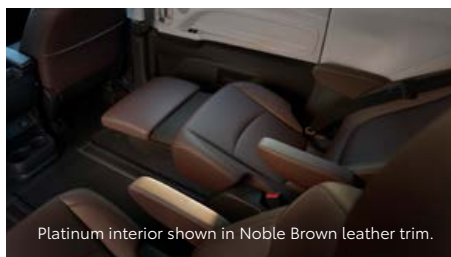
INTERIOR

Full of good ideas.

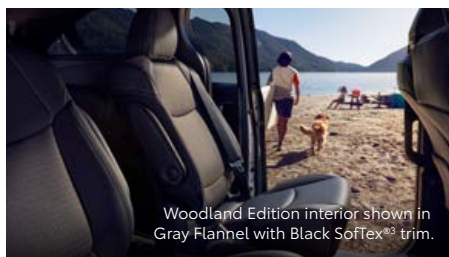
From the moment you sit behind the wheel of Sienna, you're the one in control. With no inch overlooked, Sienna's thoughtfully designed interior is the ideal balance of function and style.



XSE interior shown in Moonstone with Gray Flannel SofTex^{®3} trim.



Platinum interior shown in Noble Brown leather trim.



Woodland Edition interior shown in Gray Flannel with Black SofTex^{®3} trim.



Woodland Edition shown in Cement with Gray Flannel with Black SofTex^{®3} interior trim.

Second-row captain's chairs

Sienna's available super-long-slide seats and captain's chairs with built-in ottomans⁴ slide back for enhanced comfort or move up to make more room for cargo or passengers in the third row.

Unique seats and stitching

Sienna Woodland Edition's dark chrome-accented exterior and black badging is complemented by an interior to match. Black SofTex^{®3} sport-trimmed seats feature a unique stitch color that raises the bar in style and comfort.

1500W-capable power outlet

With Sienna's available 1500W-capable power outlet⁵, you can bring the comforts of home wherever you go.

PERFORMANCE

Keeps up with your hustle.

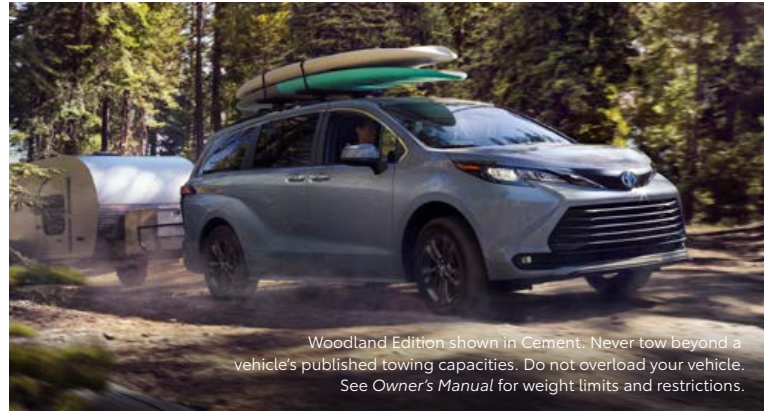
Every Sienna is a hybrid. With this powertrain's capabilities, there's never a dull moment behind the wheel. Feel more confident and in control on the road, whether navigating highways or trails. All there's left for you to worry about is what to pack.



Woodland Edition shown in Cement.

Hybrid performance

Whether you're driving around the city during the day or taking a weekend road trip, Sienna's class-leading EPA-estimated 36 combined mpg¹ helps keep you going. And with 3500 lbs. of towing capacity,^{50,51} you can bring more with you on your next adventure.



Woodland Edition shown in Cement. Never tow beyond a vehicle's published towing capacities. Do not overload your vehicle. See Owner's Manual for weight limits and restrictions.

All-Wheel Drive capability

Gravel, rain or snow, Sienna's available All-Wheel Drive (AWD) system helps give you confidence on unfamiliar roads.



XSE shown in Ruby Flare Pearl.²

Sport-tuned suspension

Sienna doesn't compromise on performance. Its available sport-tuned suspension helps deliver a dynamic drive every time you get behind the wheel.

COMFORT

Refined in all the right ways.



XSE interior shown in Moonstone with Gray Flannel SoftTex^{®3} trim.

Four-zone climate control

You like it hot. Your partner likes it cool. Your son needs it to be 70 degrees exactly. And your dog likes it toasty. Using Sienna's available best-in-class four-zone climate control system⁶, you can set the temperature for each zone so everyone can keep their cool.



Platinum interior shown in Noble Brown leather trim.

Entertainment center

On road trips or campouts, passengers can watch their favorite shows in the back with Sienna's available 1080p HD rear-seat entertainment center.



Platinum interior shown in Noble Brown leather trim.

Heated and ventilated seats

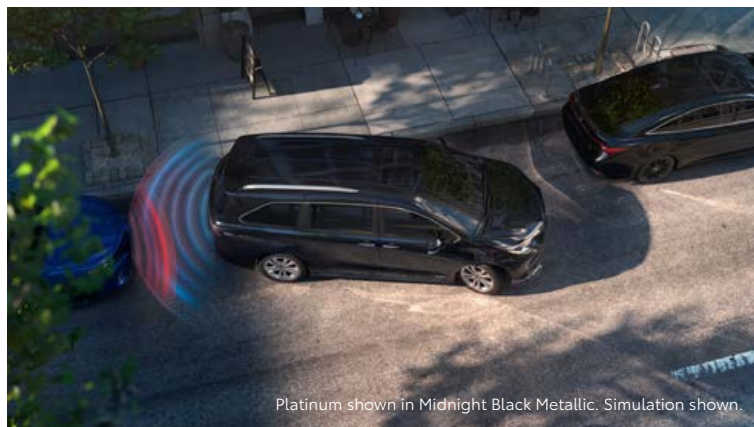
Sienna's available heated and ventilated front seats and heated rear captain's chairs bring enhanced comfort — no matter the season.

See numbered footnotes in Disclosures section.

CONVENIENCE

A real people pleaser.

In a rush and not sure if you've locked the car's doors? Well, with Sienna's available Remote Connect trial or subscription,⁷ you can use your compatible smart device to check. Along with a host of other capabilities like remote vehicle start, Sienna helps keep you in control. 4G network dependent.



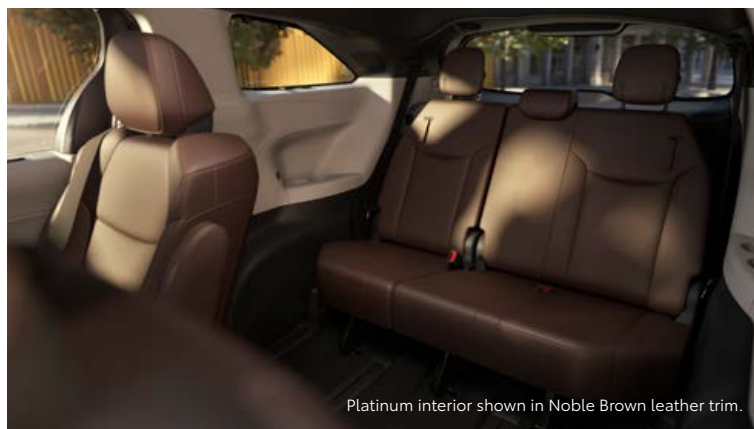
Front and Rear Parking Assist with Automatic Braking

Up your parking game. When pulling in or backing out of a tight space, Sienna's available Front and Rear Parking Assist with Automatic Braking (PA w/AB)⁹ sends you audio and visual notifications, helping you park under pressure — without breaking a sweat.



Seven USB ports

Passengers can freely use their phones and tablets without worrying about their battery levels by connecting to one of the seven USB ports found across all three rows.⁸



Split & Stow 3rd Row[®] seat

Make room for more friends, more stuff or both. Sienna's 60/40 One-Motion-Stow Split & Stow 3rd Row[®] seat easily folds down so you can configure the space in the back to meet the day's needs.

Technology that keeps up with you.

Take advantage of the smart and convenient technologies designed to simplify your everyday life. Trial periods available on select models for the listed Connected Services.¹⁰ 4G network dependent.



Toyota App

With active applicable Connected Services¹⁰ subscriptions, the Toyota app¹¹ allows you to stay connected to your Sienna wherever you go. Available for Apple^{®12} and Android^{™13} devices.

- ✓ Remote Vehicle Start⁷ and Lock/Unlock Doors
- ✓ Check Up on Your Toyota's Health
- ✓ Schedule a Service Appointment
- ✓ Shop for Genuine Toyota Parts and Accessories
- ✓ Make a Payment With Your TFS Account



Safety Connect[®]

Round-the-clock help when the unexpected happens.¹⁴

- ✓ Emergency Assistance Button (SOS)
- ✓ Enhanced Roadside Assistance¹⁵
- ✓ Automatic Collision Notification
- ✓ Stolen Vehicle Locator¹⁶



Service Connect

Being proactive to help keep your vehicle in peak condition.¹⁷

- ✓ Vehicle Health Report
- ✓ Vehicle Maintenance Alert
- ✓ Maintenance Reminder



Wi-Fi Connect

Turn your Toyota into a hotspot with 4G connectivity.¹⁸

- ✓ AT&T Hotspot



Dynamic Navigation

Dynamic Navigation¹⁹ provides you with the most up-to-date map data, routes and points of interest (POIs) on your vehicle's factory-installed navigation system, through real-time updates downloaded from the Cloud.

- ✓ Dynamic Map
- ✓ Dynamic Route
- ✓ Dynamic POI



Destination Assist

Destination Assist²⁰ provides drivers 24-hour access to a live agent who can provide directions through the vehicle's factory-installed navigation system to an address or point of interest.



Remote Connect

Manage your vehicle through the Toyota app¹¹ including Remote Start and much more.⁷

- ✓ Remote Vehicle Start (if equipped)
- ✓ Unlock/Lock
- ✓ Remote Notifications
- ✓ Guest Driver
- ✓ Smartwatch Compatibility

*To view included trial details, please visit toyota.com/connected-services.



XSE interior shown in Moonstone with Gray Flannel SofTex^{®3} trim and XSE Plus Package.

AUDIO MULTIMEDIA

Entertainment for every day.

Play music, make calls, send messages and more from Sienna's 9-in. touchscreen audio multimedia display. And available Dynamic Navigation¹⁹ shows you turn-by-turn directions right before your eyes, while its available Premium JBL^{®23} Audio system plays your favorite albums and podcasts with enhanced sound quality.



Apple CarPlay[®]

With Sienna's Apple CarPlay^{®24} compatibility standard, you can use your compatible iPhone^{®25} with the multimedia system to get directions, make calls, send and receive messages, and listen to music, all while staying focused behind the wheel.



Android Auto[™]

Stay connected on the road. By pairing your compatible Android^{™26} phone with the audio multimedia system, Android Auto^{™27} lets you get real-time traffic alerts, make and receive phone calls, listen to your favorite soundtrack and more.



SiriusXM[®] 3-month Platinum Plan trial subscription

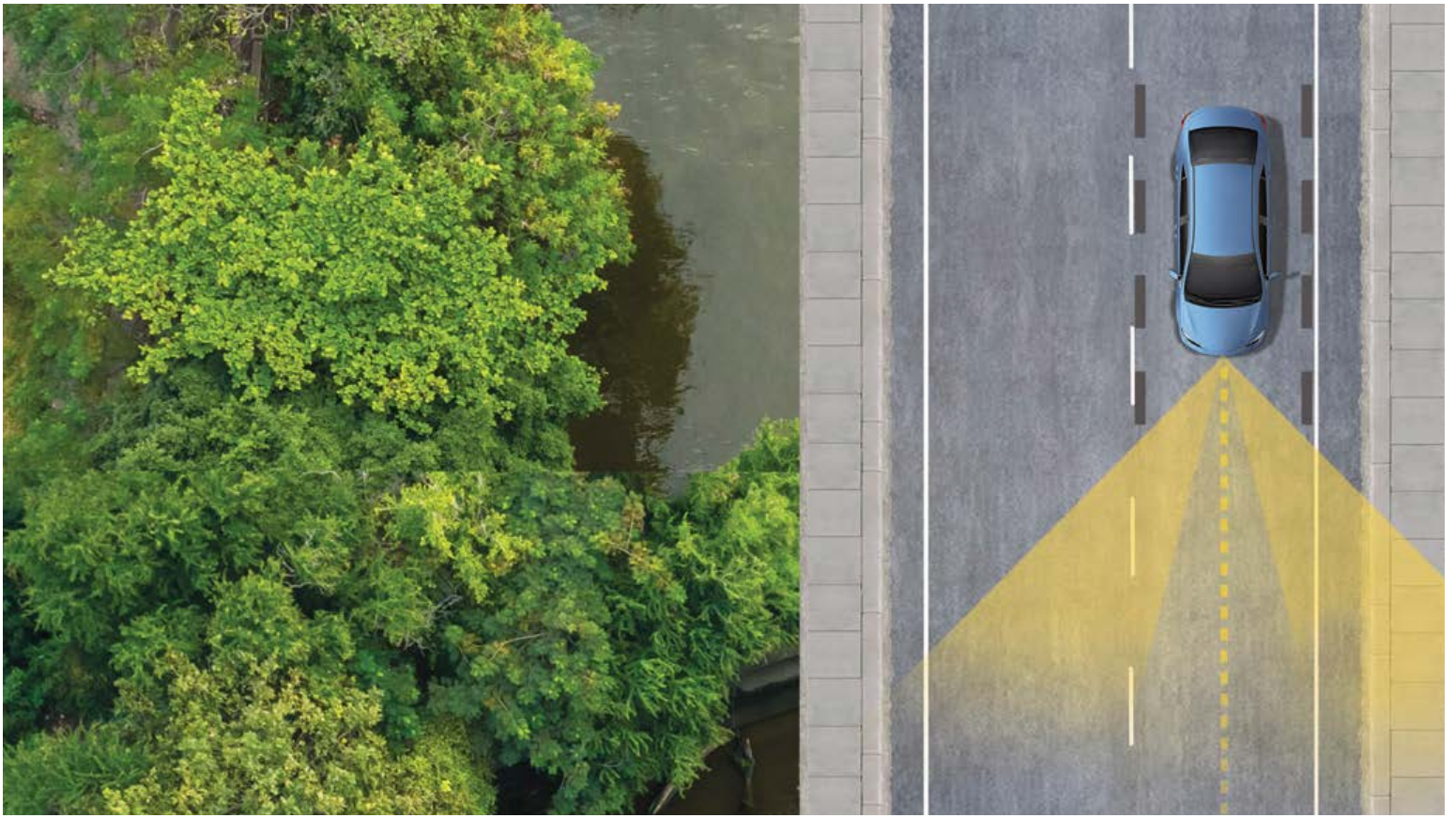
SiriusXM^{®28} has premium entertainment that you won't hear anyplace else. With the Platinum Plan 3-month trial,²⁹ you get you get 425+ channels, including 165+ channels in your vehicle, to enjoy ad-free music, plus sports, news, talk, comedy and more.



JBL[®] Premium Audio System

Experience the clear sound of Sienna's available JBL^{®23} premium audio system. With its 1200 watts, 12 speakers, surround sound and high-quality engineering, phenomenal sound is delivered to amp up every drive.

Screen depictions accurate at time of posting. Services and/or their feature availability may vary by model grade. See toyota.com/connected-services. See numbered footnotes in Disclosures section.



TOYOTA SAFETY SENSE™ 2.0 (TSS 2.0)

Peace of mind comes standard.

Toyota Safety Sense™ 2.0 (TSS 2.0)³⁰ is a bundle of active safety features included on many new Toyota vehicles at no additional cost. These innovative features were designed to help protect you and your passengers from harm.



Pre-Collision System with Pedestrian Detection³¹



Full-Speed Range Dynamic Radar Cruise Control³²



Lane Departure Alert with Steering Assist³³



Automatic High Beams³⁴



Lane Tracing Assist³⁵



Road Sign Assist³⁶

SIENNA MODELS



LE

Includes these key features

Mechanical/Performance

- ✓ Hybrid engine: 2.5L 4-cylinder with 245 net hp
- ✓ Electronically controlled Continuously Variable Transmission (ECVT) with sequential shift mode
- ✓ Normal, Eco, EV³⁷ and Sport drive modes
- ✓ Front-Wheel Drive (FWD)
- ✓ Available All-Wheel Drive (AWD)
- ✓ Up to 36 city/36 highway/36 combined EPA-est. mpg³⁸

Exterior Features

- ✓ LED headlights and LED DRL with auto on/off feature
- ✓ LED taillights and stop lights
- ✓ Color-keyed heated power outside mirrors
- ✓ Dual power sliding side doors
- ✓ 17-in. alloy wheels
- ✓ Privacy glass on rear windows
- ✓ Color-keyed rear spoiler

Interior Features

- ✓ Seating for eight
- ✓ Three-zone automatic climate control
- ✓ Fabric-trimmed seats
 - Second-row bench with stowable center seat
 - 60/40 One-Motion-Stow Split & Stow 3rd Row[®] seat
- ✓ 4.2-in. Multi-Information Display (MID)
- ✓ Remote keyless entry system with Push Button Start
- ✓ Manual second-row sunshades
- ✓ Seven USB ports⁵
- ✓ Electric Parking Brake (EPB)³⁹ with Brake Hold⁴⁰ function
- ✓ Rear-seat reminder

Audio Multimedia

- ✓ Audio includes:
 - 9-in. touchscreen and six speakers
 - Android Auto^{™27} & Apple CarPlay^{®24} compatible
 - SiriusXM^{®28} with 3-month Platinum Plan trial subscription²⁹
- ✓ Connected Services¹⁰ Safety Connect[®] trial¹⁴ 4G network dependent.

Safety Features

- ✓ Toyota Safety Sense[™] 2.0 (TSS 2.0)³⁰
- ✓ Star Safety System[™]
- ✓ Ten airbags⁴¹
- ✓ Blind Spot Monitor (BSM)⁴² with Rear Cross-Traffic Alert (RCTA)⁴³

Package

- ✓ LE Plus Package includes:
 - Auto-dimming rearview mirror
 - Wireless charging surface⁴⁴
 - Power tilt/slide moonroof with sunshade
 - Black roof rails
 - Audio Plus multimedia system



XLE

Adds to or replaces features offered on LE

Mechanical/Performance

- ✓ Available All-Wheel Drive (AWD)
- ✓ Up to 36 city/36 highway/36 combined EPA-est. mpg³⁸

Exterior Features

- ✓ Integrated wide-angle LED fog lights
- ✓ Hands-free dual power sliding side doors⁴⁵
- ✓ Power liftgate with jam protection with available hands-free feature⁴⁵
- ✓ Chrome-accented color-keyed outside door handles
- ✓ Power tilt/slide moonroof with sunshade
- ✓ Front and Rear Parking Assist with Automatic Braking (PA w/AB)⁹

Interior Features

- ✓ Seating for up to eight
- ✓ Four-zone automatic climate control
- ✓ SofTex[®]-trimmed³ seats
 - Heated front seats
 - Second-row captain's chairs with super-long-slide feature
 - Available second-row bench with stowable center seat
 - 60/40 One-Motion-Stow Split & Stow 3rd Row[®] seat
- ✓ Leather-trimmed tilt/telescopic steering wheel
- ✓ Smart Key System with Push Button Start

Audio Multimedia

- ✓ Audio Plus includes:
 - 9-in. touchscreen and eight speakers
 - Android Auto^{™27} & Apple CarPlay^{®24} compatible
 - SiriusXM^{®28} with 3-month Platinum Plan trial subscription²⁹
- ✓ Connected Services¹⁰ Safety Connect[®] trial¹⁴ 4G network dependent.

Safety Features

- ✓ Toyota Safety Sense[™] 2.0 (TSS 2.0)³⁰
- ✓ Star Safety System[™]
- ✓ Ten airbags⁴¹
- ✓ Blind Spot Monitor (BSM)⁴² with Rear Cross-Traffic Alert (RCTA)⁴³

Packages/Options

- ✓ XLE Plus Package includes:
 - Wireless charging⁴⁴ surface
 - Black roof rails
 - Premium Audio, Dynamic Navigation with 3-year trial¹⁹
 - 12 JBL^{®23} speakers including subwoofer and amplifier
- ✓ 1500W power outlet⁵ (requires XLE Plus Package)
- ✓ Entertainment Package (requires XLE Plus Package)
- ✓ 18-in. bright wheels



XSE

Adds to or replaces features offered on XLE

Mechanical/Performance

- ✓ Sport-tuned suspension
- ✓ Available All-Wheel Drive (AWD)
- ✓ Up to 36 city/36 highway/36 combined EPA-est. mpg³⁸

Exterior Features

- ✓ LED headlights and LED-strip DRL with auto on/off feature
- ✓ Black side rocker panels
- ✓ Metallic black sport mesh front grille
- ✓ Black heated power outside mirrors
- ✓ 20-in. dark wheels
- ✓ Rear lower bumper in black sport mesh
- ✓ Black Sienna liftgate logo
- ✓ Black roof-mounted shark-fin antenna

Interior Features

- ✓ Seating for seven
- ✓ Driver Easy Speak
- ✓ SofTex^{®3} sport-trimmed seats
 - Heated front seats
 - Second-row captain's chairs with super-long-slide feature
 - 60/40 One-Motion-Stow Split & Stow 3rd Row[®] seat

Audio Multimedia

- ✓ Premium Audio includes:
 - 9-in. touchscreen and eight speakers
 - Dynamic Navigation with 3-year trial¹⁹
 - Android Auto^{™27} & Apple CarPlay^{®24} compatible
 - SiriusXM^{®28} with 3-month Platinum Plan trial subscription²⁹
- ✓ Connected Services¹⁰ Safety Connect[®] trial¹⁴ 4G network dependent.

Safety Features

- ✓ Toyota Safety Sense[™] 2.0 (TSS 2.0)³⁰
- ✓ Star Safety System[™]
- ✓ Ten airbags⁴¹
- ✓ Blind Spot Monitor (BSM)⁴² with Rear Cross-Traffic Alert (RCTA)⁴³

Packages/Options

- ✓ XSE Plus Package includes:
 - Wireless charging⁴⁴ surface
 - Black roof rails
 - Premium Audio with 12 JBL^{®23} speakers including subwoofer and amplifier
- ✓ 1500W power outlet⁵ (requires XLE Plus Package)
- ✓ Entertainment Package (requires XLE Plus Package)
- ✓ XSE Premium Package includes:
 - Qi-compatible wireless smartphone charging⁴⁴
 - Black roof rails
 - Premium Audio with 12 JBL^{®23} speakers including subwoofer and amplifier
 - 7-in. color Multi-Information Display (MID)
 - Power tilt/telescopic steering wheel with memory
 - Heated power auto-dimming outside mirrors with puddle lights and power-folding, reverse-tilt-down and memory features
 - Leather-trimmed heated and ventilated front seats with driver memory function
 - Manual second- and third-row sunshades

SIENNA MODELS



Woodland Edition

Adds to or replaces features offered on XLE

Mechanical/Performance

- ✓ Increased ground clearance
- ✓ All-Wheel Drive (AWD)
- ✓ 35 city/36 highway/35 combined EPA-est. mpg³⁸

Exterior Features

- ✓ Available in Cement or Midnight Black Metallic
- ✓ Black lower grille garnish
- ✓ Dark chrome upper grille garnish
- ✓ Towing hitch receiver⁵¹
- ✓ 18-in. dark wheels
- ✓ Black roof rails with cross bars
- ✓ Black Sienna liftgate logo
- ✓ Black Toyota emblem and grade badge

Interior Features

- ✓ Seating for seven
- ✓ Wireless charging surface⁴⁴
- ✓ 1500W power outlet⁵
- ✓ All-weather floor mats⁴⁶
- ✓ Driver Easy Speak
- ✓ SofTex^{®3} sport-trimmed seats
 - Heated front seats
 - Second-row captain's chairs with super-long-slide feature
 - 60/40 One-Motion-Stow Split & Stow 3rd Row[®] seat

Audio Multimedia

- ✓ Premium Audio includes:
 - 9-in. touchscreen and 12 JBL^{®23} speakers including subwoofer and amplifier
 - Dynamic Navigation with 3-year trial¹⁹
 - Android Auto^{™27} & Apple CarPlay^{®24} compatible
 - SiriusXM^{®28} with 3-month Platinum Plan trial subscription²⁹
- ✓ Connected Services¹⁰ Safety Connect[®] trial¹⁴ 4G network dependent.

Safety Features

- ✓ Toyota Safety Sense[™] 2.0 (TSS 2.0)³⁰
- ✓ Star Safety System[™]
- ✓ Ten airbags⁴¹
- ✓ Blind Spot Monitor (BSM)⁴² with Rear Cross-Traffic Alert (RCTA)⁴³

Option

- ✓ Entertainment Package



Limited

Adds to or replaces features offered on XLE

Mechanical/Performance

- ✓ Available All-Wheel Drive (AWD)
- ✓ Up to 36 city/36 highway/36 combined EPA-est. mpg³⁸

Exterior Features

- ✓ LED headlights and LED-strip DRL with auto on/off feature
- ✓ Black side rocker panels
- ✓ Dark gray metallic front grille
- ✓ 18-in. bright wheels
- ✓ Chrome roof rails
- ✓ Rear lower bumper in black with chrome accent
- ✓ Chrome-accented Sienna liftgate logo
- ✓ Color-keyed roof-mounted shark-fin antenna

Interior Features

- ✓ Seating for seven
- ✓ Driver Easy Speak
- ✓ Wireless charging surface⁴⁴
- ✓ Leather-trimmed seats
 - Heated front seats
 - Second-row captain's chairs with super-long-slide feature and ottomans⁴
 - SofTex[®]-trimmed³ 60/40 One-Motion-Stow Split & Stow 3rd Row[®] seat
- ✓ Leather-trimmed power tilt/telescopic steering wheel
- ✓ 7-in. Multi-Information Display (MID)
- ✓ Manual second- and third-row sunshades

Audio Multimedia

- ✓ Premium Audio includes:
 - 9-in. touchscreen and 12 JBL^{®23} speakers including subwoofer and amplifier
 - Dynamic Navigation with 3-year trial¹⁹
 - Android Auto^{™27} & Apple CarPlay^{®24} compatible
 - SiriusXM^{®28} with 3-month Platinum Plan trial subscription²⁹
- ✓ Connected Services¹⁰ Safety Connect[®] trial¹⁴ 4G network dependent.

Safety Features

- ✓ Toyota Safety Sense[™] 2.0 (TSS 2.0)³⁰
- ✓ Star Safety System[™]
- ✓ Ten airbags⁴¹
- ✓ Blind Spot Monitor (BSM)⁴² with Rear Cross-Traffic Alert (RCTA)⁴³

Packages/Options

- ✓ 1500W power outlet⁵
- ✓ Entertainment Package



Platinum

Adds to or replaces features offered on Limited

Mechanical/Performance

- ✓ Available All-Wheel Drive (AWD)
- ✓ Up to 36 city/36 highway/36 combined EPA-est. mpg³⁸

Exterior Features

- ✓ Signature Bi-LED projector headlights and LED-strip DRL with auto on/off feature
- ✓ Panoramic View Monitor (PVM)⁴⁷
- ✓ 20-in. metallic wheels
- ✓ Rain-sensing variable windshield wipers

Interior Features

- ✓ Seating for seven
- ✓ Leather-trimmed seats
 - Heated and ventilated front seats
 - Heated second-row captain's chairs with super-long-slide feature and ottomans⁴
 - SofTex[®]-trimmed³ 60/40 One-Motion-Stow Split & Stow 3rd Row[®] seat
- ✓ Leather-trimmed heated power tilt/telescopic steering wheel
- ✓ 10-in. color Head-Up Display (HUD)

Audio Multimedia

- ✓ Premium Audio includes:
 - 9-in. touchscreen and 12 JBL^{®23} speakers including subwoofer and amplifier
 - Dynamic Navigation with 3-year trial¹⁹
 - Android Auto^{™27} & Apple CarPlay^{®24} compatible
 - SiriusXM^{®28} with 3-month Platinum Plan trial subscription²⁹
- ✓ Connected Services¹⁰ Safety Connect[®] trial¹⁴ 4G network dependent.

Safety Features

- ✓ Toyota Safety Sense[™] 2.0 (TSS 2.0)³⁰
- ✓ Star Safety System[™]
- ✓ Ten airbags⁴¹
- ✓ Blind Spot Monitor (BSM)⁴² with Rear Cross-Traffic Alert (RCTA)⁴³

Packages/Options

- ✓ 1500W power outlet⁵
- ✓ Entertainment Package

SIENNA COLORS & TRIMS



Midnight Black Metallic



Blueprint



Cypress



Ruby Flare Pearl²



Sunset Bronze Mica



Predawn Gray Mica



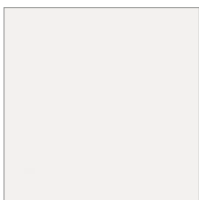
Cement



Celestial Silver Metallic

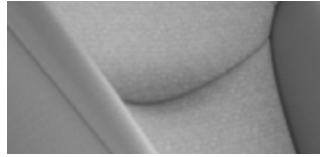


Wind Chill Pearl²

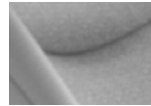


Ice Cap

LE fabric shown in Gray



XLE SofTex®³ trim shown in Chateau



Graphite

XSE SofTex®³ trim shown in Gray Flannel with Moonstone



Woodland Edition SofTex®³ trim shown in Gray Flannel with Black

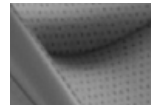


Gray Flannel with Black

XSE Premium perforated leather trim shown in Black



Limited perforated leather trim shown in Chateau



Graphite

Platinum perforated leather trim shown in Noble Brown



SIENNA WHEELS



LE and XLE
17-in. alloy wheels



XSE FWD
20-in. dark wheels



XSE AWD and Woodland Edition
18-in. dark wheels



XLE and Limited
18-in. bright wheels



Platinum AWD
18-in. metallic wheels



Platinum FWD
20-in. metallic wheels

SIENNA ACCESSORIES

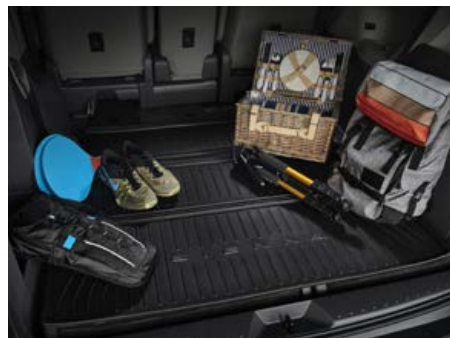
This is a great way to add extra personality to your Sienna. Not every accessory is available in your area, so for a complete list of accessories, go to toyota.com/sienna/accessories.



All-weather floor liner⁴⁶



Body side moldings



Cargo liner⁴⁸



Cargo organizer⁴⁸



Cargo tray⁴⁸



Cross bars⁴⁹



Illuminated doorsills



Towing hitch receiver and wiring harness^{50,51}



Integrated dashcam⁵²

WARRANTIES

Every Toyota Car, Truck and SUV is built to exceptional standards. And that's not idle boasting. We back it up with these Limited Warranty Coverages:

Basic: 36 months/36,000 miles (all components other than normal wear and maintenance items).

Hybrid-Related Component Coverage: Hybrid-related components, including the battery control module, hybrid control module and inverter with converter, are covered for 8 years/100,000 miles. Refer to applicable *Warranty and Maintenance Guide* for details.

Hybrid Battery: HV battery is covered for 10 years or 150,000 miles, whichever comes first. Warranty coverage is subject to terms and conditions. Refer to applicable *Warranty and Maintenance Guide* for details.

Powertrain: 60 months/60,000 miles (engine, transmission/transaxle, drive system, seatbelts and airbags).

Rust-Through: 60 months/unlimited miles (corrosion perforation of sheet metal).

Emissions: Coverages vary under Federal and California regulations. Refer to applicable *Warranty and Maintenance Guide* for details.

Accessories: For Genuine Toyota Accessories purchased at the time of the new vehicle purchase, the Toyota Accessory Warranty coverage is in effect for 36 months/36,000 miles from the vehicle's in-service date, which is the same coverage as the Toyota New Vehicle Limited Warranty.

For Genuine Toyota Accessories purchased after the new vehicle purchase the coverage is 12 months, regardless of mileage, from the date the accessory was installed on the vehicle, or the remainder of any applicable new vehicle warranty, whichever provides greater coverage.

You may be eligible for transportation assistance if it's necessary that your vehicle be kept overnight for repairs covered under warranty. Please see your authorized Toyota dealership for further details.

For complete details about Toyota's warranties, please visit www.toyota.com, refer to the applicable *Warranty and Maintenance Guide* or see your Toyota dealer.

SIENNA FEATURES⁵³

S = Standard O = Optional A = Available P = Available as part of a package

Exterior

	LE	XLE	XSE	Woodland Edition	Limited	Platinum
LED headlights and LED Daytime Running Lights (DRL) with auto on/off feature	S	S		S		
LED headlights and LED-strip DRL with auto on/off feature			S		S	
Signature Bi-LED projector headlights and LED-strip Daytime Running Lights (DRL) with auto on/off feature						S
Integrated wide-angle LED fog lights		S	S	S	S	S
LED taillights and stop lights	S	S		S		
Premium LED taillights and stop lights			S		S	S
Black side rocker panels			S		S	S
Black grille	S	S		S		
Dark gray metallic grille					S	S
Metallic black sport mesh front grille			S			
Color-keyed heated power outside mirrors with blind spot warning indicators ⁴²	S	S		S		
Black heated power outside mirrors with blind spot warning indicators ⁴²			S			
Color-keyed heated power auto-dimming outside mirrors with blind spot warning indicators ⁴² ; puddle lights and power-folding, reverse tilt-down and memory features					P	S
Color-keyed heated power auto-dimming outside mirrors with blind spot warning indicators ⁴² ; puddle lights and power-folding, reverse tilt-down, memory and Panoramic View Monitor (PVM) ⁴⁷ features						S
Dual power sliding side doors	S					
Hands-free dual power sliding side doors ⁴⁵		S	S	S	S	S
Power liftgate with jam protection		S	S	S	S	S
Hands-free power liftgate with jam protection ⁴⁵		A	A		A	A
Color-keyed outside door handles	S					
Chrome-accented color-keyed outside door handles		S	S	S	S	S
Power tilt/slide moonroof with sunshade	P	S	S	S	S	S
17-in. alloy wheels with P235/65R17 tires	S	S				
18-in. dark wheels with P245/60R18 tires (AWD)			S	S		
18-in. metallic wheels with P235/60R18 tires (AWD)						S
18-in. bright wheels with P235/60R18 tires		O				S
20-in. dark wheels with P235/50R20 tires (FWD)			S			
20-in. metallic wheels with P235/50R20 tires (FWD)						S
Variable windshield wipers	S	S	S	S	S	
Rain-sensing variable windshield wipers						S
Intermittent rear wiper	S	S	S	S	S	S
Black roof rails	P	P	P	S		
Black roof rail cross bars				S		
Chrome roof rails					S	S
Rear lower bumper in black	S	S		S		
Rear lower bumper in black sport mesh			S			
Rear lower bumper in black with chrome accent					S	S
Color-keyed rear spoiler with LED center high-mount stop light and integrated concealed intermittent rear wiper	S	S	S	S	S	S
Black Toyota emblem and grade badge				S		
Black Sienna logo liftgate license garnish	S	S	S	S		
Chrome-accented Sienna logo liftgate license garnish					S	S
Chrome Toyota emblem and grade badge	S	S	S		S	S
Chrome AWD badge (AWD)	S	S	S		S	S
Black AWD badge				S		
Black roof-mounted shark-fin antenna	S	S	S	S		
Color-keyed roof-mounted shark-fin antenna					S	S
Towing hitch receiver ^{50,51} and wiring harness with 4-pin connector				S		

Interior

Three-zone automatic climate control with air filter, individual temperature settings for driver, front passenger and rear-seat passengers, and separate rear digital control panel	S					
Four-zone automatic climate control with air filter, individual temperature settings for driver, front passenger and rear-seat passengers, and separate rear digital control panel		S	S	S	S	S
Integrated backup camera ⁵⁴	S	S	S	S	S	S
Panoramic View Monitor (PVM) ⁴⁷ with 360-degree Overhead View in low-speed drive and reverse, and Curb View						S
Driver Easy Speak		P	S	S	S	S
1080p HD Entertainment Center with 11.6-in. display, HDMI inputs, remote and two wireless headphones ⁵⁵		P	P	P	P	P

See numbered footnotes in Disclosures section.

SIENNA FEATURES⁵³

S = Standard O = Optional A = Available P = Available as part of a package

Interior (continued)

	LE	XLE	XSE	Woodland Edition	Limited	Platinum
Qi-compatible wireless smartphone charging ⁴⁴	P	P	P	S	S	S
1500W inverter (with two 120V AC outlets) ⁵		P	P	S	O	O
Fabric-trimmed front seats with seatback pockets; 8-way power-adjustable driver's seat	S					
SofTex®-trimmed ³ heated front seats with seatback pockets; 8-way power-adjustable driver's seat with power lumbar; 4-way power-adjustable front passenger seat		S				
SofTex ^{®3} sport-trimmed heated front seats with seatback pockets; 8-way power-adjustable driver's seat with power lumbar; 4-way power-adjustable front passenger seat			S	S		
Leather-trimmed heated and ventilated front seats with seatback pockets; 8-way power-adjustable driver's seat with power lumbar and driver memory function; 4-way power-adjustable front passenger seat			P		S	S
8-passenger seating with fabric-trimmed second-row bench with stowable center seat	S					
8-passenger seating with SofTex®-trimmed ³ second-row bench with stowable center seat (FWD)		S				
7-passenger seating with SofTex®-trimmed ³ second-row captain's chairs with super-long-slide feature (FWD/AWD)		S				
7-passenger seating with SofTex ^{®3} sport-trimmed second-row captain's chairs with super-long-slide feature			S	S		
7-passenger seating with premium leather-trimmed second-row-seat captain's chairs with super-long-slide feature and ottomans ⁴					S	
7-passenger seating with heated premium leather-trimmed second-row-seat captain's chairs with super-long-slide feature and ottomans ⁴						S
Fabric-trimmed 60/40 One-Motion-Stow Split & Stow 3rd Row [®] seat	S					
SofTex®-trimmed ³ 60/40 One-Motion-Stow Split & Stow 3rd Row [®] seat		S			S	S
SofTex ^{®3} sport-trimmed 60/40 One-Motion-Stow Split & Stow 3rd Row [®] seat			S	S		
Tilt/telescopic steering wheel with audio, Multi-Information Display (MID), Bluetooth ^{®56} hands-free phone and voice-command, Full-Speed Range Dynamic Radar Cruise Control (DRCC) ³² Lane Departure Alert (LDA) ³³ and Lane Tracing Assist (LTA) ³⁵ controls	S					
Leather-trimmed tilt/telescopic steering wheel with audio, Multi-Information Display (MID), Bluetooth ^{®56} hands-free phone and voice-command, Full-Speed Range Dynamic Radar Cruise Control (DRCC) ³² Lane Departure Alert (LDA) ³³ and Lane Tracing Assist (LTA) ³⁵ controls		S	S	S		
Leather-trimmed tilt/telescopic steering wheel with memory and with audio, Multi-Information Display (MID), Bluetooth ^{®56} hands-free phone and voice-command, Full-Speed Range Dynamic Radar Cruise Control (DRCC) ³² Lane Departure Alert (LDA) ³³ and Lane Tracing Assist (LTA) ³⁵ controls			P		S	
Leather-trimmed, heated, tilt/telescopic steering wheel with memory and with audio, Multi-Information Display (MID), Bluetooth ^{®56} hands-free phone and voice-command, Full-Speed Range Dynamic Radar Cruise Control (DRCC) ³² Lane Departure Alert (LDA) ³³ and Lane Tracing Assist (LTA) ³⁵ controls						S
4.2-in. color TFT Multi-Information Display (MID) with odometer, fuel economy, trip information and warning messages	S	S	S	S		
7-in. Multi-Information Display (MID) with odometer, fuel economy, trip information and warning messages			P		S	S
Remote keyless entry system with lock, unlock, panic and Push Button Start	S					
Smart Key System on five doors with Push Button Start and remote illuminated entry		S	S	S	S	S
Power windows with one-touch auto up/down, jam protection in all positions	S	S	S	S	S	S
Rear window defogger with timer	S	S	S	S	S	S
Power door locks with shift-activated locking feature and anti-lockout feature	S	S	S	S	S	S
Manual second-row sunshades	S	S	S	S		
Manual second- and third-row sunshades			P		S	S
Non-glare rearview mirror	S					
Auto-dimming rearview mirror and HomeLink ^{®57} universal transceiver	P	S	S	S	S	S
10-in. color Head-Up Display (HUD) with speedometer, navigation and Hybrid System Indicator						S
Overhead console with maplights and dome lights, side door controls and Safety Connect ^{®14}	S					
Overhead console with maplights and dome lights, side door and liftgate controls, conversation mirror, sunglasses storage and Safety Connect ^{®14}		S	S	S	S	S
Fixed center console with wood-grain-style accents, pass-through, illuminated storage compartment and four illuminated cup holders	S	S		S	S	S
Fixed center console with satin-grain-style accents, pass-through, illuminated storage compartment and four illuminated cup holders			S			
Lockable glove compartment	S	S	S	S	S	S
One 12V ⁵⁸ DC outlet (under bridge console)	S	S	S	S	S	S
One USB port and six USB charge ports ⁹	S	S	S	S	S	S

See numbered footnotes in Disclosures section.

SIENNA FEATURES^{5,3}

S = Standard O = Optional A = Available P = Available as part of a package

Interior (continued)

	LE	XLE	XSE	Woodland Edition	Limited	Platinum
Retractable assist grips at all outboard seating positions	S	S	S	S	S	S
Dual sun visors with illuminated vanity mirrors	S	S	S	S	S	S
Up to 18 cup and bottle holders	S	S	S	S	S	S
Front- and rear-door map pockets with bottle holders	S	S	S	S	S	S
Electric Parking Brake (EPB) ³⁹ with Brake Hold ⁴⁰ function	S	S	S	S	S	S

Audio Multimedia

Audio — 9-in. touchscreen, six speakers, Android Auto^{TM27} & Apple CarPlay^{®24} compatible, seven USB ports,⁸ hands-free phone capability and music streaming⁵⁶ via Bluetooth^{®56} wireless technology, SiriusXM^{®28} with 3-month Platinum Plan trial subscription.²⁹ See toyota.com/audio-multimedia for details. Connected Services¹⁰ — Safety Connect[®] with 1-year trial,¹⁴ Wi-Fi Connect with up to 2 GB within 3-month trial.¹⁸ See toyota.com/connected-services for details. 4G network dependent.

S

Audio Plus — 9-in. touchscreen, eight speakers, Android Auto^{TM27} & Apple CarPlay^{®24} compatible, seven USB ports,⁸ hands-free phone capability and music streaming⁵⁶ via Bluetooth^{®56} wireless technology, SiriusXM^{®28} with 3-month Platinum Plan trial subscription.²⁹ See toyota.com/audio-multimedia for details. Connected Services¹⁰ — Safety Connect[®] with 1-year trial,¹⁴ Service Connect with 10-year trial,¹⁷ Remote Connect with 1-year trial,⁷ Wi-Fi Connect with up to 2 GB within 3-month trial.¹⁸ See toyota.com/connected-services for details. 4G network dependent.

P

S

Premium Audio and Dynamic Navigation with 3-year trial¹⁹ — 9-in. touchscreen, eight speakers, Android Auto^{TM27} & Apple CarPlay^{®24} compatible, seven USB ports,⁸ hands-free phone capability and music streaming⁵⁶ via Bluetooth^{®56} wireless technology, SiriusXM^{®28} with 3-month Platinum Plan trial subscription.²⁹ See toyota.com/audio-multimedia for details. Connected Services¹⁰ — Safety Connect[®] with 1-year trial,¹⁴ Remote Connect with 1-year trial,⁷ Service Connect with 10-year trial,¹⁷ Wi-Fi Connect with up to 2 GB within 3-month trial.¹⁸ See toyota.com/connected-services for details. 4G network dependent.

S

S

Premium Audio and Dynamic Navigation with 3-year trial¹⁹ — 9-in. touchscreen, 12 JBL^{®23} speakers, including subwoofer and amplifier, Android Auto^{TM27} & Apple CarPlay^{®24} compatible, seven USB ports,⁸ hands-free phone capability and music streaming⁵⁶ via Bluetooth^{®56} wireless technology, SiriusXM^{®28} with 3-month Platinum Plan trial subscription.²⁹ See toyota.com/audio-multimedia for details. Connected Services¹⁰ — Safety Connect[®] with 1-year trial,¹⁴ Service Connect with 10-year trial,¹⁷ Remote Connect with 1-year trial,⁷ Wi-Fi Connect with up to 2 GB within 3-month trial,¹⁸ Destination Assist with 1-year trial.²⁰ See toyota.com/connected-services for details. 4G network dependent.

P

P

S

S

S

Safety and Convenience



Star Safety SystemTM — includes Enhanced Vehicle Stability Control (VSC),⁵⁹ Traction Control (TRAC), Anti-lock Brake System (ABS), Electronic Brake-force Distribution (EBD), Brake Assist (BA)⁶⁰ and Smart Stop Technology[®] (SST)⁶¹

S

S

S

S

S

S

Toyota Safety SenseTM 2.0 (TSS 2.0)³⁰ — Pre-Collision System with Pedestrian Detection (PCS w/PD),³¹ Full-Speed Range Dynamic Radar Cruise Control (DRCC),³² Lane Departure Alert with Steering Assist (LDA w/SA),³³ Automatic High Beams (AHB),³⁴ Lane Tracing Assist (LTA)³⁵ and Road Sign Assist (RSA)³⁶

S

S

S

S

S

S

Ten airbags⁴¹ — includes driver and front passenger Advanced Airbag System, driver, front passenger and second-row outboard seat-mounted side airbags, driver knee airbag, front passenger seat-cushion airbag, side curtain airbags

S

S

S

S

S

S

3-point seatbelts for all seating positions; driver-side Emergency Locking Retractor (ELR) and Automatic/Emergency Locking Retractors (ALR/ELR) on all passenger seatbelts

S

S

S

S

S

S

Adjustable seatbelt anchors on front and outboard second-row seats and driver and front passenger seatbelt pretensioners with force limiters

S

S

S

S

S

S

Four LATCH (Lower Anchors and Tethers for CHildren) locations: includes lower anchors on outboard second-row seats, and passenger-side and center third-row seats

S

S

S

S

S

Five LATCH (Lower Anchors and Tethers for CHildren) locations: includes lower anchors on all three second-row seats, and passenger-side and center third-row seats

S

Child-protector rear door locks

S

S

S

S

S

S

Tire Pressure Monitor System (TPMS)⁶² with direct pressure readout and individual tire location alert

S

S

S

S

S

S

Safety Connect^{®14} — includes Emergency Assistance, Stolen Vehicle Locator,¹⁶ Roadside Assistance¹⁵ and Automatic Collision Notification. Available by subscription. Complimentary one-year trial subscription.¹⁴ (Includes roof-mounted shark-fin antenna)

S

S

S

S

S

S

Front and Rear Parking Assist Sonar with Automatic Braking (PA w/AB)⁹

S

S

S

S

S

Blind Spot Monitor (BSM)⁴² with Rear Cross-Traffic Alert (RCTA)⁴³ with Rear Cross-Traffic Braking (RCTB)

S

S

S

S

S

S

Hill Start Assist Control (HAC)⁶³

S

S

S

S

S

S

SIENNA PACKAGES

S = Standard O = Optional A = Available P = Available as part of a package

Safety and Convenience (continued)

	LE	XLE	XSE	Woodland Edition	Limited	Platinum
Anti-theft system with alarm and engine immobilizer ⁴⁴	S	S	S	S	S	S
Tire repair kit	S	S	S	S	S	S

Packages and Options

LE Plus Package: includes auto-dimming rearview mirror and HomeLink⁵⁷ universal transceiver, Qi-compatible wireless smartphone charging,⁴⁴ power tilt/slide moonroof with sunshade, black roof rails and Audio Plus — includes 9-in. touchscreen, eight speakers, seven USB ports,⁵ hands-free phone capability and music streaming⁵⁶ via Bluetooth⁵⁶ wireless technology, Android Auto^{TM27} & Apple CarPlay⁸²⁴ compatible, SiriusXM⁹²⁸ with 3-month Platinum Plan trial subscription.²⁹ See toyota.com/audio-multimedia for details. Connected Services¹⁰ — Safety Connect[®] with 1-year trial,¹⁴ Service Connect with 10-year trial,¹⁷ Remote Connect with 1-year trial,⁷ Wi-Fi Connect with up to 2 GB within 3-month trial.¹⁸ See toyota.com/connected-services for details.

P

XLE Plus Package: includes Qi-compatible wireless smartphone charging,⁴⁴ black roof rails and Premium Audio, Dynamic Navigation trial¹⁹ and JBL[®] w/Clari-Fi⁸⁶⁵ — includes 9-in. touchscreen, 12 JBL⁸²³ speakers including subwoofer and amplifier, seven USB ports,⁵ hands-free phone capability and music streaming⁵⁶ via Bluetooth⁵⁶ wireless technology, Android Auto^{TM27} & Apple CarPlay⁸²⁴ compatible, SiriusXM⁹²⁸ with 3-month Platinum Plan trial subscription.²⁹ See toyota.com/audio-multimedia for details. Connected Services¹⁰ — Safety Connect[®] with 1-year trial,¹⁴ Service Connect with 10-year trial,¹⁷ Remote Connect with 1-year trial,⁷ Wi-Fi Connect with up to 2 GB within 3-month trial,¹⁸ Destination Assist with 1-year trial.²⁰ See toyota.com/connected-services for details.

P

XSE Plus Package: includes Qi-compatible wireless smartphone charging,⁴⁴ black roof rails and Premium Audio, Dynamic Navigation trial¹⁹ and JBL[®] w/Clari-Fi⁸⁶⁵ — includes 9-in. touchscreen, 12 speakers including subwoofer and amplifier, seven USB ports,⁵ hands-free phone capability and music streaming⁵⁶ via Bluetooth⁵⁶ wireless technology, Android Auto^{TM27} & Apple CarPlay⁸²⁴ compatible, SiriusXM⁹²⁸ with 3-month Platinum Plan trial subscription.²⁹ See toyota.com/audio-multimedia for details. Connected Services¹⁰ — Safety Connect[®] with 1-year trial,¹⁴ Service Connect with 10-year trial,¹⁷ Remote Connect with 1-year trial,⁷ Wi-Fi Connect with up to 2 GB within 3-month trial,¹⁸ Destination Assist with 1-year trial.²⁰ See toyota.com/connected-services for details.

P

XSE Premium Package: includes Qi-compatible wireless smartphone charging,⁴⁴ black roof rails; Premium Audio and Dynamic Navigation with 3-year trial¹⁹ — 9-in. touchscreen, 12 JBL⁸²³ speakers including subwoofer and amplifier; 7-in. color Multi-Information Display (MID); leather-trimmed, power tilt/telescopic steering wheel with memory; heated power auto-dimming outside mirrors with blind spot warning indicators,⁴² puddle lights and power-folding, reverse tilt-down, and memory features; leather-trimmed heated and ventilated front seats with seatback pockets; 8-way power-adjustable driver's seat with power lumbar and driver memory function; manual second- and third-row sunshades

P

Entertainment Package: includes 1080p HD Entertainment Center with 11.6-in. display, HDMI input, remote and two wireless headphones ⁵⁵		P*	P**	P	P	P
1500W inverter (with two 120V AC outlets) ⁵		O*	O**	S	O	O
Spare tire ⁴	O	O	O	O	O	O
Roof rails	O	O	O	S	S	S

SIENNA SPECIFICATIONS

*Requires Plus Package
** Requires Plus Package or Premium Package

Mechanical/Performance

ENGINE	LE	XLE	XSE	Woodland Edition	Limited	Platinum
Hybrid — 2.5-Liter with Double Overhead Cam (DOHC), 16-Valve, D-4S Injection and Dual VVT-i	S	S	S	S	S	S
245 net hybrid system hp	S	S	S	S	S	S
EMISSION RATING						
Super Ultra Low Emission Vehicle (SULEV) ²²	S	S	S	S	S	S
ELECTRIC MOTORS						
Permanent magnet synchronous motors (two front) (FWD)	S	S	S		S	S
Permanent magnet synchronous motors (two front, one rear) (AWD)	S	S	S	S	S	S
TRACTION BATTERY						
Battery type: sealed Nickel-Metal Hydride (Ni-MH)	S	S	S	S	S	S
TRANSMISSION						
Electronically controlled Continuously Variable Transmission (ECVT) with sequential shift mode	S	S	S	S	S	S

See numbered footnotes in Disclosures section.

SIENNA SPECIFICATIONS

S = Standard O = Optional A = Available P = Available as part of a package

Mechanical/Performance (continued)

	LE	XLE	XSE	Woodland Edition	Limited	Platinum
DRIVETRAIN						
Front-Wheel Drive (FWD)	S	S	S		S	S
Electronic On-Demand All-Wheel Drive (AWD) system	A	A	A	S	A	A
DRIVE MODES						
Normal, Eco, EV, ³⁷ Sport	S	S	S	S	S	S
SUSPENSION						
Increased ground clearance				S		
Sport-tuned suspension			S			
STEERING						
Electric Power Steering (EPS)	S	S		S	S	S
Sport-tuned Electric Power Steering (EPS)			S			
Turning circle diameter, curb to curb (ft.) (FWD)	38.30	38.30	39.20	38.30	38.30	39.20
Turning circle diameter, curb to curb (ft.) (AWD)	38.30	38.30	39.20	38.30	38.30	38.30
BRAKES						
Ventilated 12.9-in. front disc brakes	S	S	S	S	S	S
Ventilated 12.5-in. rear disc brakes	S	S	S	S	S	S

Dimensions

EXTERIOR DIMENSIONS (in.)						
Overall length	203.7	203.7	204.1	203.7	203.7	203.7
Overall width	78.5	78.5	78.5	78.5	78.5	78.5
Overall height, unloaded, with/without roof rails	68.5/69.7	68.5/69.7	68.5/69.7	NA/70.3	68.5/69.7	68.5/69.7
Wheelbase	120.5	120.5	120.5	120.5	120.5	120.5
Track (front/rear)	67.7/68.5	67.7/68.5	67.7/68.5	67.7/68.5	67.7/68.5	67.7/68.5
Ground clearance	6.37	6.37	6.37	6.96	6.37	6.37
Coefficient of drag (Cd)	0.29	0.29	0.31	0.29	0.29	0.29
INTERIOR DIMENSIONS, front/second-row/third-row seats (in.)						
Passenger volume with/without moonroof (cu. ft.)	159.7/162.5	159.7/162.5	159.7/162.5	159.7/162.5	159.7/162.5	159.7/162.5
Interior volume with/without moonroof (cu. ft.)	193.2/195.9	193.2/195.9	193.2/195.9	193.2/195.9	193.2/195.9	193.2/195.9
Head room	40.1/39.9/37.4	40.1/39.9/37.4	40.1/39.9/37.4	40.1/39.9/37.4	40.1/39.9/37.4	40.1/39.9/37.4
Shoulder room	62.4/62.7/58.5	62.4/62.7/58.5	62.4/62.7/58.5	62.4/62.7/58.5	62.4/62.7/58.5	62.4/62.7/58.5
Hip room	59.6/66.2/48.8	59.6/66.2/48.8	59.6/66.2/48.8	59.6/66.2/48.8	59.6/66.2/48.8	59.6/66.2/48.8
Leg room	40.3/39.9/38.7	40.3/39.9/38.7	40.3/39.9/38.7	40.3/39.9/38.7	40.3/39.9/38.7	40.3/39.9/38.7

Weights and Capacities

Curb weight (lb.)	4610	4625	4675	4625	4725	4725
Cargo volume ⁴⁸ (cu. ft.) behind third/second-row/first-row seats	33.5/75.2/101	33.5/75.2/101	33.5/75.2/101	33.5/75.2/101	33.5/75.2/101	33.5/75.2/101
Fuel tank (gal.)	18	18	18	18	18	18
Seating capacity	8	8/7	7	7	7	7

Towing

Towing capacity ^{50, 51} (lb.)	3500	3500	3500	3500	3500	3500
---	------	------	------	------	------	------

Tires

All-Season steel-belted radials	S	S	S	S	S	S
Tire repair kit	S	S	S	S	S	S
Spare tire ⁴	O	O	O	O	O	O

Mileage estimates (mpg city/highway/combined)³⁸

Front-Wheel Drive (FWD)	36/36/36	36/36/36	36/36/36		36/36/36	36/36/36
All-Wheel Drive (AWD)	35/36/35	35/36/35	35/36/35	35/36/35	35/36/35	35/36/35

DISCLOSURES

1. 2024 Sienna vs. 2023 and 2024 competitors. Information from manufacturers' websites as of 8/07/2023. Excludes electric vehicles. EPA-estimated 36 city/36 hwy/36 combined mpg for 2024 Sienna FWD models. Use for comparison purposes only. Your mileage will vary for many reasons, including your vehicle's condition and how/where you drive. See www.fueleconomy.gov. 2. Extra-cost color. 3. SofTex® is a registered trademark of Toyota Motor Sales, U.S.A., Inc. 4. When spare tire is added to Limited AWD or Platinum AWD, second-row ottomans are removed. Do not use the ottoman feature when the vehicle is in motion. Only use when the vehicle is stationary. If the ottoman feature is in use during an accident, the lap belt may slide past the hips. This could result in restraint forces being applied directly to the abdomen, or your neck may contact the shoulder belt, increasing the risk of death or serious injury. See *Owner's Manual* for details. 5. Rated for 1500 watts shared between both outlets. Do not exceed 1500 watts. See *Owner's Manual* for additional limitations and details. 6. 2024 Sienna vs. 2023 and 2024 competitors. Information from manufacturers' websites as of 8/07/2023. 7. Use only if aware of circumstances surrounding vehicle it is legal safe to do so (e.g., do not remotely start a gas engine vehicle in an enclosed space or if vehicle is occupied by a child). Remote Connect depends on certain factors outside of Toyota's control in order to operate, including cellular network availability and GPS signal. Without either of these things, operability may be limited or precluded. Services subject to change at any time without notice. Bluetooth® connectivity is required if your subscription includes Digital Key capability. Remote start/stop only available on select models. See your Toyota dealer for details. Terms of Use apply. Data charges may apply. See *Owner's Manual* and <https://www.toyota.com/connected-services/>. To learn about Toyota's Connected Services' data collection, use, sharing and retention practices, please visit <https://www.toyota.com/support/privacy-notice/>. The Toyota Remote Connect trial period is at no extra cost and begins on the original date of purchase or lease of a new vehicle. Paid subscription required after trial to access the service. Terms of use apply. 8. May not be compatible with all mobile phones, smart devices, tablets, e-readers, MP3/WMA players and like models. 9. Front and Rear Parking Assist with Automatic Braking (PA w/AB) may warn drivers of, and potentially brake for front and rear collisions with certain objects when traveling at low speeds. Drivers should visually confirm clearance during use. See *Owner's Manual* for instructions and limitations. 10. Toyota Connected Services depend on certain factors outside of Toyota's control in order to operate, including cellular network availability and GPS signal. Without either of these things, operability may be limited or precluded, including access to response center and emergency support. Services vary by vehicle and are subject to change at any time without notice. Requires app download/registration and subscription after trial (if applicable). Terms of Use apply. Data charges may apply. See *Owner's Manual* and <https://www.toyota.com/connected-services/>. For Toyota's Connected Services' data collection, use, sharing and retention practices, please visit <https://www.toyota.com/support/privacy-notice/>. 11. An active Remote Connect trial or subscription is required to use the features mentioned in the Toyota app. 12. Apple and the Apple logo are trademarks of Apple Inc., registered in the U.S. and other countries. 13. Google, Android, Android Auto, YouTube Music and other marks are trademarks of Google LLC. 14. Safety Connect® depends on factors outside of Toyota's control in order to operate, including cellular network availability and GPS signal. Without either of these things, operability may be limited or precluded, including access to response center and emergency support. Stolen vehicle police report required to use Stolen Vehicle Locator. If subscription includes Automatic Collision Notification, it will activate only in limited circumstances. Services vary by vehicle and are subject to change at any time without notice. Terms of Use apply. Data charges may apply. See *Owner's Manual* and <https://www.toyota.com/connected-services/>. For Toyota's Connected Services' data collection, use, sharing and retention practices, please visit <https://www.toyota.com/support/privacy-notice/>. The Safety Connect® trial period is at no extra cost and begins on the original date of purchase or lease of a new vehicle. After the trial period expires, enrollment in paid subscription is required to access the service. 15. Requires cellular network availability, a cellular connection and GPS signal. May not work in all areas. Service may vary by vehicle and region. See Toyota dealer for details and exclusions. 16. Building and/or parking structures may limit system effectiveness. Stolen vehicle police report required to use Stolen Vehicle Locator. For additional assistance contact the Toyota Brand Engagement Center at 1-800-331-4331. 17. Service Connect depends on certain factors outside of Toyota's control in order to operate, including cellular network availability and GPS signal. Without either of these things, operability may be limited or precluded. Information provided is based on the last time data was collected from vehicle and is not real-time data. Services vary by vehicle and are subject to change at any time without notice. Terms of Use apply. Data charges may apply. See usage precautions and service limitations in *Owner's Manual* and <https://www.toyota.com/connected-services/>. To learn about Toyota's Connected Services' data collection, use, sharing and retention practices, please visit <https://www.toyota.com/support/privacy-notice/>. The Service Connect trial period is at no extra cost and begins on the original date of purchase or lease of a new vehicle. Subscription required after trial. Service Connect renewal will be included when Safety Connect®, Remote Connect or Destination Assist connected service renewal is selected. Service Connect is not renewable as a stand-alone service. 18. Service not available everywhere or in every vehicle. Depends on cellular network availability and GPS signal. Without either of these things, operability may be limited or precluded. Up to 5 devices can be supported using in-vehicle connectivity. Services subject to change at any time without notice. The Wi-Fi Connect trial begins at the time of enrollment and expires the earlier of 3GB data use or the 1-month trial period ends. Paid subscription required after trial. Select models include Integrated Streaming capability, which requires a separate subscription to third-party provider services. Data charges may apply. Valid in the contiguous U.S. and Alaska. Go to <https://myvehicle.att.com/#/toyota/learn?language=en&country=US> for terms and conditions. Terms and conditions apply. 19. Operability and accuracy of Dynamic Navigation depends on certain factors outside of Toyota's control in order to operate, including cellular network availability, a cellular connection and GPS signal. Without any one or more of these things, operability may be limited or precluded. Services not available in every city or roadway. Use common sense when relying on information provided. Service is subject to change at any time without notice. Data charges may apply. See *Owner's Manual* and <https://www.toyota.com/connected-services/> for limitations. To learn about Toyota's Connected Services data collection, use, sharing and retention practices, visit <https://www.toyota.com/support/privacy-notice/>. The Dynamic Navigation trial period is at no extra cost and trial begins the earlier of vehicle hits 100 miles or 1 year after multimedia system manufacture date (regardless of purchase or lease date). Paid subscription required after trial (if applicable). Terms of Use apply. 20. Destination Assist requires a trial or subscription to Drive Connect. Drive Connect availability and accuracy depend on certain factors outside of Toyota's control in order to operate, including 4G network availability, a cellular connection and GPS signal. Without any one or more of these things, operability may be limited or precluded. Services subject to change at any time without notice. Requires app download/registration and subscription after trial (if applicable). Terms of Use apply. Data charges may apply. See *Owner's Manual* and <https://www.toyota.com/connected-services/> for limitations. To learn about Toyota's Connected Services data collection, use, sharing and retention practices, visit <https://www.toyota.com/support/privacy-notice/>. The Destination Assist trial period begins on original purchase or lease date of new vehicle. Paid subscription required after trial (if applicable). Terms of Use apply. 21. Drive Connect availability and accuracy depend on certain factors outside of Toyota's control in order to operate, including 4G network availability, a cellular connection and GPS signal. Without any one or more of these things, operability may be limited or precluded. Services subject to change at any time without notice. Requires app download/registration and subscription after trial (if applicable). Terms of Use apply. Data charges may apply. See *Owner's Manual* and <https://www.toyota.com/connected-services/> for limitations. To learn about Toyota's Connected Services data collection, use, sharing and retention practices, please visit <https://www.toyota.com/support/privacy-notice/>. Trial period begins on original purchase or lease date of new vehicle. Paid subscription required after trial (if applicable). Terms of Use apply. 22. Meets Tier 2/Bin 3 Federal emissions standard. 23. JBL® is a registered trademark of Harman International Industries, Inc. 24. Requires compatible smartphone. Operability depends on network availability, a cellular connection and GPS signal. Services subject to change at any time without notice. Data charges may apply. To learn more, go to <https://www.toyota.com/connected-services/>. To learn more about Toyota's Connected Services data collection, use, sharing and retention practices, please visit <https://www.toyota.com/support/privacy-notice/>. Apple CarPlay® is a registered trademark of Apple Inc. 25. iPhone® is a registered trademark of Apple Inc. All rights reserved. 26. Google, Android, Android Auto, YouTube Music and other marks are trademarks of Google LLC. 27. Google, Android, Android Auto, YouTube Music and other marks are trademarks of Google LLC. Android Auto requires compatible smartphone. Operability depends on network availability, a cellular connection and GPS signal. To use Android Auto on your car display, you'll need an Android phone running Android 8 or higher, an active data plan, and the Android Auto app. Services subject to change at any time without notice. Data charges may apply. To learn more, go to <https://www.toyota.com/audio-multimedia/>. To learn more about Toyota's Connected Services data collection, use, sharing and retention practices, please visit <https://www.toyota.com/support/privacy-notice/>. 28. Trial length and service availability may vary by model, model year or trim. Service will automatically stop at the end of your trial subscription period unless you decide to continue service. If you do not wish to enjoy your trial, you can cancel by calling the number below. All SiriusXM services require a subscription, each sold separately by SiriusXM after the trial period. **Service subject to the SiriusXM Customer Agreement and Privacy Policy; visit www.siriusxm.com to see complete terms and how to cancel which includes calling 1-866-635-2349.** Some services and features are subject to device capabilities and location availability. All fees, content and features are subject to change. SiriusXM, Pandora and all related logos are trademarks of Sirius XM Radio Inc. and its respective subsidiaries. 29. SiriusXM® services require a subscription after trial period. See SiriusXM Customer Agreement for complete terms at www.siriusxm.com. 30. Toyota Safety Sense™ effectiveness is dependent on many factors including road, weather and vehicle conditions. Drivers are responsible for their own safe driving. Always pay attention to your surroundings and drive safely. See *Owner's Manual* for limitations. 31. The Pre-Collision System (PCS) with Pedestrian Detection (PD) is designed to determine if impact is imminent and help reduce impact speed and damage in certain frontal collisions involving a vehicle, a pedestrian or a bicyclist. PCS w/PD is not a substitute for safe and attentive driving. System effectiveness depends on many factors, such as speed, size and position of pedestrian or bicyclist and weather, light and road conditions. See *Owner's Manual* for limitations. 32. Full-Speed Range Dynamic Radar Cruise Control is not a substitute for safe and attentive driving. See *Owner's Manual* for instructions and limitations. 33. Lane Departure Alert with Steering Assist is designed to read visible lane markers under certain conditions. It provides a visual/audible alert and slight steering force when lane departure is detected. It is not a collision-avoidance system or a substitute for safe and attentive driving. Effectiveness depends on many factors including road, weather and vehicle conditions. See *Owner's Manual* for limitations. 34. Automatic High Beams operate at speeds above 21 mph. See *Owner's Manual* for instruction and limitations. 35. Lane Departure Alert with Steering Assist is designed to read visible lane markers under certain conditions. It provides a visual/audible alert and slight steering force when lane departure is detected. It is not a collision-avoidance system or a substitute for safe and attentive driving. Effectiveness depends on many factors including road, weather and vehicle conditions. See *Owner's Manual* for limitations. 36. Road Sign Assist only recognizes certain road signs. See *Owner's Manual* for limitations. 37. EV Mode lets you operate solely on battery power at low speeds for short distances and in limited circumstances, such as in a parking garage. Different conditions may prevent or limit usage. See your *Owner's Manual* for limitations and details. 38. EPA-estimated 36 city/36 hwy/36 combined mpg rating for 2024 Sienna FWD models; 35 city/36 hwy/35 combined mpg rating for 2024 Sienna AWD models. Use for comparison purposes only. Your mileage will vary for many reasons, including your vehicle's condition and how/where you drive. See www.fueleconomy.gov. 39. When the system is on, Electric Parking Brake is designed to engage the Parking Brake under limited conditions. It may not hold the vehicle under all conditions. See *Owner's Manual* for additional limitations and details. 40. When the system is on and the vehicle is in Drive, Brake Hold may temporarily keep the brakes engaged after the driver brings the vehicle to a complete stop. See *Owner's Manual* for limitations. 41. Airbag systems supplement the seatbelts and are designed to inflate only under certain conditions and in certain types of severe collisions. Always wear seatbelt, sit upright in middle and as far back in seat as possible to help decrease risk of injury. Do not put objects in front of an airbag. See *Owner's Manual* for limitations. 42. Do not rely exclusively on Blind Spot Monitor. Look over shoulder and use turn signal. See *Owner's Manual* for limitations. 43. Do not rely exclusively on the Rear Cross-Traffic Alert. Visually confirm clearance during use. See *Owner's Manual* for limitations.

DISCLOSURES

44. Charging may not be compatible with all mobile phones, smart devices, tablets, e-readers, MP3/WMA players and like products. **45.** Kick sensor is not compatible with tow hitch and other accessories that mount to or near the rear bumper. **46.** This floor mat/floor liner was designed specifically for use in your model and model year vehicle and SHOULD NOT be used in any other vehicle. To avoid potential interference with pedal operation, each mat/liner must be secured with its fasteners. Do not install a floor mat/floor liner on top of an existing floor mat/floor liner. **47.** The Panoramic View Monitor does not provide a comprehensive view of the area surrounding your vehicle. Look around to confirm clearance. See *Owner's Manual* for limitations. **48.** Cargo and load capacity limited by weight and distribution. Always properly secure cargo and cargo area. **49.** Do not overload vehicle and properly secure roof load. See *Owner's Manual* for weight limits and restrictions. **50.** Selection of the Genuine Toyota tow hitch will require removing or disabling the kick sensor, and the sensor operation setting in your vehicle should be turned off. Water, weather, dirt and other conditions also may cause the sensor to not operate properly or to operate unintentionally. See *Owner's Manual* for limitations. **51.** Before towing, confirm your vehicle and trailer are compatible, hooked up and loaded properly and that you have any necessary additional equipment. Do not exceed any Weight Ratings and follow all instructions in your *Owner's Manual*. The maximum you can tow depends on base curb weight plus the total weight of any cargo, occupants, and added vehicle equipment. "Added vehicle equipment" includes additional standard/optional equipment and accessories added by the manufacturer, dealers, and/or vehicle owners. The only way to be certain of your vehicle's exact curb weight is to weigh your vehicle without passengers or cargo. [Calculated with the new SAE J2807 method.] See *Owner's Manual* for limitations. **52.** Dashcam may not record under certain conditions. Use in accordance with applicable laws. See dashcam *Owner's Manual* for details. **53.** Toyota strives to build vehicles to match customer interest and thus they typically are built with popular options and option packages. Not all options/packages are available separately and some may not be available in all regions of the country. See toyota.com for information about options/packages commonly available in your area. If you would prefer a vehicle without any or with different options, contact your dealer to check for current availability or the possibility of placing a special order. Color(s) depicted may vary based on multiple factors, including ambient lighting and the format in which it is being viewed (e.g., computer, mobile device or print). **54.** The backup camera does not provide a comprehensive view. Always look over shoulder and use outside mirrors. See *Owner's Manual* for limitations. **55.** Headphones are for passenger use only. **56.** A compatible Bluetooth®-enabled phone must first be paired. Phone performance depends on software, coverage and carrier. The Bluetooth® word mark and logos are registered trademarks of Bluetooth SIG, Inc. Use of such marks by Toyota is under license. **57.** HomeLink® and the HomeLink® house icon are registered trademarks of Gentex Corporation. **58.** Rated for 12 volts/10 amps. See *Owner's Manual* for additional limitations and details. **59.** Vehicle Stability Control is not a substitute for safe and attentive driving practices. Factors including speed, road conditions, weather and steering input can affect whether VSC will be effective. See *Owner's Manual* for limitations. **60.** Brake Assist is designed to help the driver take advantage of ABS and is not a substitute for safe driving practices. Braking effectiveness also depends on proper vehicle maintenance, tire and road conditions. See *Owner's Manual* for additional limitations and details. **61.** Smart Stop Technology® will reduce power to help the brakes bring vehicle to a stop during certain contemporaneous brake and accelerator pedal applications. See *Owner's Manual* for limitations. **62.** The Tire Pressure Monitor System alerts the driver when tire pressure is critically low. For optimal tire wear and performance, tire pressure should be checked regularly with a gauge; do not rely solely on the monitor system. See *Owner's Manual* for limitations and details. **63.** Hill Start Assist Control is designed to minimize backward rolling on steep ascents. Not a substitute for safe driving judgment and practices. Speed, grade, surface conditions, driver input, etc., can all affect HAC function. See *Owner's Manual*. **64.** The engine immobilizer is a state-of-the-art anti-theft system initiated when the key is inserted into ignition switch or a Smart Key fob is in/near the vehicle. Engine will only start if the code in the transponder chip inside the key/fob matches the code in vehicle's immobilizer. The transponder chip is embedded in the key/fob and can be costly to replace. For lost key or fob, see a Toyota dealer or go to www.aloa.org to find a qualified locksmith for high-security key service. **65.** JBL® and Clari-Fi® are registered trademarks of Harman International Industries, Inc.

Toyota strives to build vehicles to match customer interest and thus they typically are built with popular options and option packages. Not all options/packages are available separately and some may not be available in all regions of the country. See toyota.com for information about options/packages commonly available in your area. If you would prefer a vehicle without any or with different options, contact your dealer to check for current availability or the possibility of placing a special order.

Color(s) depicted may vary based on multiple factors, including ambient lighting and the format in which it is being viewed (e.g., computer, mobile device or print).

Some vehicles are shown with available equipment. Seatbelts should be worn at all times. For details on vehicle specifications, standard features and available equipment in your area, contact your Toyota dealer. A vehicle with particular equipment may not be available at the dealership. Ask your Toyota dealer to help locate a specifically equipped vehicle.

All information presented herein is based on data available at the time of posting, is subject to change without notice and pertains specifically to mainland U.S.A. vehicles only. Vehicles shown may be prototypes, shown using visual effects and/or shown with options. Actual models may vary.



Mobility

For Toyota Mobility program details, go to www.toyotamobility.com or call the Toyota Brand Engagement Center at 1-800-331-4331